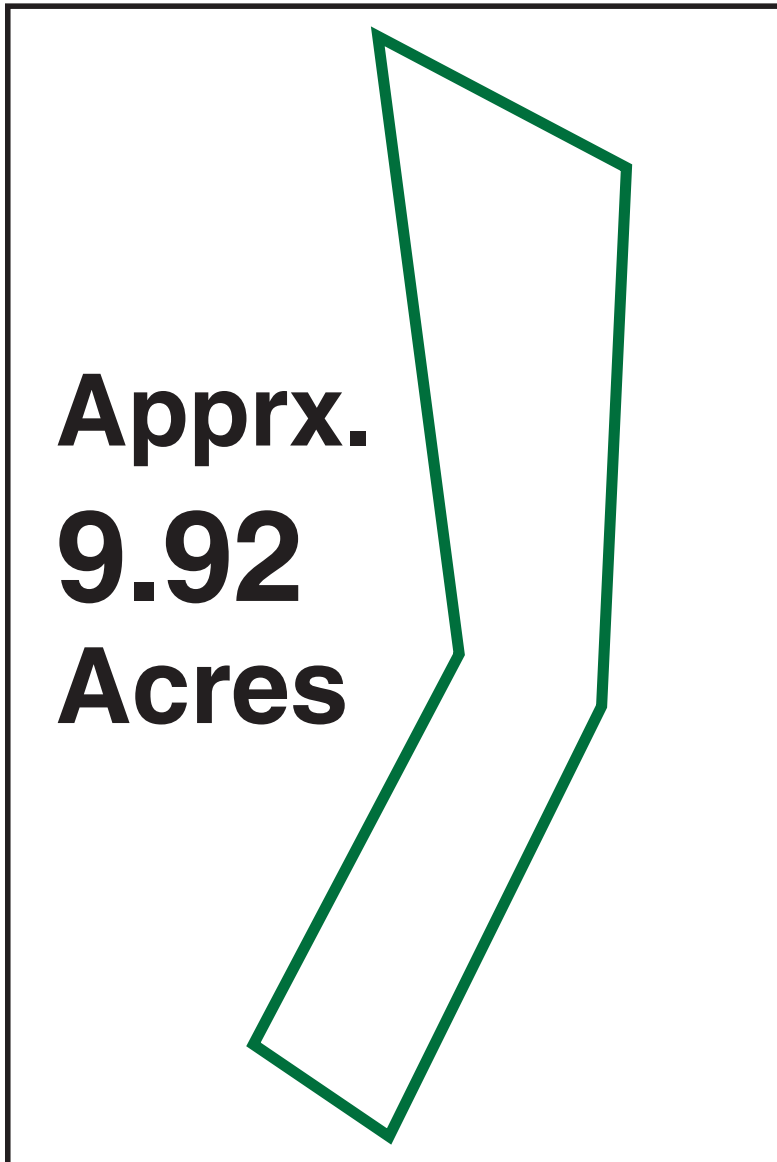


COMMERCIAL PROPERTY



- ALL UTILITIES AVAILABLE
- ZONED LIGHT INDUSTRIAL (LI-3)
- IN CITY OF CEDAR PARK
- APPRX. 245' OF FRONTAGE ON FM 2769

All information contained herein deemed reliable but not guaranteed.



for more information visit
www.moreland.com



Terry Williams, GRI
Ofc. (512) 263-3282 x202
Cell (512) 699-4868
Terry@Moreland.com
www.OnlineAustinRealEstate.com